

SUCCESSFUL KIND
CONFIDENT INDIVIDUAL
ENTHUSIASTIC ASPIRATIONAL
RESILIENT CURIOUS
COMMUNITY SUPPORTIVE
GLOBAL CITIZEN

SENIOR SCHOOL





WELCOME

An introduction from Miss Katrina Handford, Head



As Head of Kent College, I have the best job in the world! What a privilege it is to watch our young people grow into confident young adults. At Kent College, all the staff have high aspirations for the students, walking alongside them on their journeys to success. Be it academics, sport, music, drama, art, or whatever field they choose, we recognise the unique strengths of every individual, creating an environment of support and challenge to aid their pursuit of excellence. I am very proud of this school because it ensures every pupil, whether 3 or 18 years of age, achieves above and beyond their potential. Whatever their strength, the environment and opportunities at Kent College provide the perfect setting to stretch and champion them to thrive.

We are an ISI 'Excellent' day school for girls

and boys in Nursery and Prep and day and boarding school for all girls in Senior and Sixth Form. As a Methodist school our ethos of kindness, community and inclusive nurturing, inspires confidence and unleashes talent. All our families and visitors comment on the warmth of our community spirit where we support each other to be the best we can be. This environment sees our young people grow into kind, compassionate individuals who know their strengths and how they can positively contribute to the world around them, as purposeful global citizens.

Of course, excellent teaching and learning, a flexible curriculum and fantastic facilities are a given, and create the perfect conditions to help all the wonderful individuals here, each with their own characters, personalities and strengths, to be able to learn and grow.

I warmly invite you to visit Kent College to see the magic for yourself at a school where the potential and promise of every individual is unlocked.

Miss Katrina Handford - Head

“If you’re looking for an injection of optimism, it’s right here: bold, courageous and resilient learning.”

GSG 2023



ABOUT US

OUR VISION

To unlock the potential of all.

OUR AIMS

To nurture, value and celebrate each individual.

To create an aspirational environment in which intellectual curiosity can flourish in order to maximise the academic achievement of all.

To promote the Methodist value of 'doing all the good you can' and inspiring all to make purposeful contributions as global citizens.

OUR VALUES

Individual excellence is at the heart of our community. We value:

ACHIEVEMENT

SUPPORT FOR ALL

PURPOSEFUL CITIZENSHIP

INDIVIDUALITY

RELIABILITY, RESPECT, RESILIENCE

ENQUIRING AND CREATIVE MINDS

ACHIEVEMENT **S**UPPORT FOR ALL **P**URPOSEFUL CITIZENSHIP **I**NDIVIDUALITY **R**ELIABILITY, RESPECT, RESILIENCE **E**NQUIRING & CREATIVE MINDS



A METHODIST SCHOOL

Kent College is one of a group of schools within the Methodist Independent Schools Trust (MIST). MIST oversees 12 independent schools and works closely with six other independent schools of Methodist foundation to provide a high quality, rounded and caring education.

Methodist Schools are inclusive and welcoming communities where individuals are valued, good order is respected, relationships cherished, and where excellence in its widest sense is pursued.

‘Do all the good you can’ – the opening of a prayer by our Methodist founder John Wesley – resonates deeply with us. Kent College pupils and staff experience community strength, non-judgmental understanding, support structures and respect.



ISI ‘EXCELLENT’ SCHOOL

The school underwent a full inspection by the Independent Schools Inspectorate in June 2023 and was found to be ‘Excellent’ in all areas. The reports can be found on our website at www.kent-college.co.uk.

“Pupils are highly confident and well prepared for the next stage of their lives.”

ISI 2023

UNLOCKING THE POTENTIAL OF ALL

Kent College Pembury is a school which ensures every student, succeeds above and beyond their potential. Whatever a student's strength, the environment and opportunities at Kent College provide the perfect setting to stretch, challenge and champion them to thrive.

“Pupils have exceptionally positive attitudes to all aspects of their learning. They have a ‘can do’ attitude and persevere at all ages.”

ISI 2023

We are an inclusive, gently selective school with a broad ability range. We take pride in knowing each and every student, and believe that no matter the academic starting point, the resilience we build, care we give and the appetite our students have to rise to challenges, leads them to succeeding in ways they could never have imagined.

Our high-flying students are stretched and provided with opportunities to excel in a safe and supportive environment. The most academically able will be stretched and challenged through our Able, Interested and Motivated (AIM) Programme. Students with SEN will be supported in the classroom, and our Supported Learning Programme will equip them with the skills to gain confidence and succeed at the highest level.

Our GCSE and A Level results are excellent, but grades only tell so much. Behind each personal achievement is a story of challenge, belief, effort and growth. Most significant is the progress that students make at Kent College, where results surpass nationally standardised predictions. Many students achieve at least one grade higher than predicted in each of their GCSE subjects, which places us as one of the leading schools in the UK for Valued Added.



Years 7 and 8

Students study a wide range of subjects taught by specialist teachers. Subjects include Maths, English, Biology, Chemistry, Physics, French, Spanish, Computer Science, Music, Drama, Dance, Art, PE, Textiles and Food Technology. Examinations are held at the end of each year.

Year 9

Students continue to study a wide range of subjects and will select two language options from French, Spanish, Latin and Classics, and two arts options from Art, Food Tech, Music and Textiles. Drama and Dance or Computer Science can also be selected. Examinations are held at the end of the year.

Year 10 and 11

Alongside a traditional core of academic subjects, students at Kent College have access to a wide range of GCSE and IGCSE options to meet every interest.

Students choose a balanced range of subjects and we recommend at least one language, one humanity and one technology-based or arts subject. Students generally select four option subjects bringing their chosen GCSE subjects to ten. There are currently 17 option subjects to choose from, with Astronomy, Classical Greek and Further Maths taught off timetable.

Small class sizes, a personalised offer and additional study options, ensure that all students have the opportunity to achieve the very best grades.

Sixth Form

Most of our students continue into the Sixth Form where we offer a wide range of academic choices and a robust extra-curricular programme to build a strong foundation for future careers and studies.

At Kent College, students can choose from 20 A Levels, AAQs in Medical Science, Marketing and Performance Arts as well as three BTECs.

Our Sixth Form Honours Programme is engaging and practical, providing opportunities to develop workplace and leadership skills through initiatives such as Ivy House and Accounting Club. Students can become peer mentors or delve into academic interests with the Extended Project Qualification (EPQ), the Gold Crest Award in STEM, or a foreign language business qualification. We endeavour to encourage each individual to broaden their horizons and fully develop the many skills which are essential for life beyond school.

Each year, we see our Sixth Form students achieve excellent results with the significant majority leaving to join their first choice university.

Further information about all the subjects we offer at GCSE and A Level can be found on our website.



PASTORAL

Wellbeing Hub

Pastoral care at Kent College is dedicated to fostering a supportive and inclusive environment where every student feels valued, respected, and empowered. Rooted in strong relationships among students, parents, teachers, and support staff, we aim to nurture and guide each student collaboratively.

Our experienced pastoral team, comprising the Deputy Head Pastoral, Head of Sixth Form, Pastoral Lead, two Student Managers, SENCO, Chaplain, School Sister and two School Counsellors provides personalised

support tailored to individual needs. Regular check-ins, one-on-one sessions, and group activities encourage open communication and trust, ensuring every student's voice is heard and their needs are addressed.

Students have a dedicated communal space, the Wellbeing Hub, at the centre of the school site. This is for use at break and lunchtimes, and designed to be a relaxed and informal environment.

Student wellbeing is a core priority. We actively promote mental health awareness and offer access to counselling services and resources, equipping students to overcome challenges, build resilience, and develop essential life skills.

To enhance the sense of community, we organise initiatives such as peer mentoring programmes, student-led mental health projects, anti-bullying ambassadors, and community events. These efforts create meaningful connections across the school and develop positive relationships within and between year groups, helping students build a strong, supportive network that extends beyond the classroom.



Student Wellbeing Officers



“Pupils exhibit a sense of personal responsibility for their actions and display positive behaviour towards others, such as empathy, kindness and respect.”

ISI 2023

GLOBAL CITIZENSHIP

Kent College is proud to have a Global Citizenship curriculum for Years 7– 9. It is taught around five key themes: Identity and Diversity; Human Rights and Social Justice; Peace and Conflict; Globalisation and Interdependence; and Sustainable Development.

DEVELOPING SKILLS AND VALUES FOR THE FUTURE

Global Citizenship education is future focused, enabling students to develop the skills and values to equip themselves as twenty-first century learners who can adapt and respond to our complex, globalised world.

Through our Global Citizenship Programme, students are able to identify the links between their curriculum subjects, recognising their real-world relevance. In addition, students learn to appreciate difference and complexity, developing an open mind to a wide range of perspectives and world views. They are encouraged to be respectful, tolerant, optimistic and are empowered to engage with key global issues such as social

justice and the environment. Students also develop a wide range of essential academic and employability skills, with a strong focus on communication, teamwork, empathy, problem solving, and critical thinking.

Students work towards attaining their Global Citizenship Diploma at the end of Year 9. This is awarded based on a range of tasks and projects from both Global Citizenship lessons as well as through cross-curricular tasks from English, Maths, Science, History and Geography, and through community and leadership activities.

GLOBAL CITIZENSHIP THROUGHOUT THE SCHOOL

Being a Global Citizen is a part of the culture and ethos of Kent College, and we develop this beyond the academic curriculum through community engagement, charity work and international trips focused on key Global Citizenship themes such as sustainable development and social justice.





Sport is a vital part of life at Kent College, helping to develop well-rounded, confident individuals through a rich and balanced programme of physical activity consisting of PE lessons, team sport training and fixtures and weekly Sport and Wellbeing lessons.

We offer a sport for everyone, whether our students are top-performing athletes or simply want to have a go, all led by highly qualified, specialist teachers using our exceptional facilities.

Kent College teams compete in local independent and state school leagues in netball, hockey, cricket, tennis, swimming, athletics, gymnastics, and cross-country. Team trials are held at the start of each term, with matches and training sessions taking place on Saturdays and weekdays. Many students represent the school in county, regional and national clubs, and in tournaments across a broad range of different sports.





STEM

Science at Kent College provides a hands-on, practical approach to learning across all three science disciplines. In Year 7, students explore the foundations of biology, chemistry, and physics, and from Year 8 onwards, they benefit from subject-specialist teaching. All students will study three separate science GCSEs.

Our dynamic and engaging Science programme inspires students both in the classroom and beyond. From participating in lessons to joining co-curricular activities such as STEMInists, Turtle Club, and Science Club, there are many opportunities to nurture a love for Science.

Additional STEM subjects offered at Kent College are Computer Science and Food Technology, which are both taught as part of the Years 7-9 curriculum. Digital Information Technology can be taken as a Level 2 BTEC and we offer a GCSE in Food Preparation and Nutrition, for those who wish to study this subject further.



ARTS

CREATIVE ARTS

From our purpose-built spacious Art studios, students produce high quality work using a range of equipment, medium and materials. We offer painting, printmaking and ceramics and our students have access to a fully equipped kiln room.

In Textiles, students have expert tuition in both surface design and construction. The rooms have industry standard sewing machines and sublimation printing facilities. The department also runs the annual national competition, Young Fashion Designer UK which students are encouraged to enter.

Art and Textiles are curriculum subjects in Years 7 and 8, and can be chosen for study in Year 9 and GCSE.



PERFORMING ARTS

From starring in high level productions, being part of a dance troupe or performing in the choir and the orchestra, to designing costumes or running technical theatre, the Performing Arts at Kent College offers opportunities for students of all ages and abilities to get involved.

Drama is at the heart of Kent College school life. Students from across the school take part in the whole school production each year and those in Years 7 to 9 have the opportunity to take part in the Lower School summer production. Performances take place in the Countess of Wessex Theatre (named after the now Duchess of Edinburgh and Kent College Old Girl) which is a modern 250 seat venue with a large stage, orchestra pit and professional technical control box.

Dance is part of the curriculum from Year 7 where students explore a variety of dance styles. Beyond the classroom, students can participate in extra-curricular clubs for Ballet, Contemporary Dance, Street Dance, and a Junior Dance Company. The annual Dance Showcase is a celebration of dance talent from across the school and is a wonderful opportunity for students to develop their technical skills, performance skills and confidence in front of an audience.

Music is taught in our dedicated Music Centre which houses a recording studio, specialist teaching and practice rooms, and a state-of-the-art computer suite with sound equipment, software and keyboards. Musicians perform in numerous and varied orchestras, choirs, bands, composition and instrumental groups in shows that include an Open Mic Night, concerts and musical theatre productions. Students can also choose weekly tuition across almost any instrument, including singing.





CO-CURRICULAR

The co-curricular programme at Kent College is integral to the school curriculum, and provides opportunities for students to develop their skills, talents and interests across a broad range of activities including sports, visual and performing arts, technology, leadership and service. All students are encouraged to follow a balanced programme of academic work and co-curricular activities to develop their natural talents and passions in and outside the classroom.

We offer a large selection of clubs and activities led by staff members and qualified external coaches. Activities take place before school, during lunch and after school, with some weekend commitments.

Types of clubs include:

SPORT AND FITNESS

Hockey, Netball, Cricket, Gymnastics and Swimming.

STEM

STEMinists, Science Club, Turtle Club.

CREATIVE ARTS

Art Club, Photography Club, Textiles Club.

PERFORMING ARTS

Chamber Choir, Choir, Pop Band, Orchestra, Drama, Technical Theatre, Ballet, Jazz, Contemporary and Street Dance.

CULTURE AND LEADERSHIP

Classics Club, Duke of Edinburgh, HALO, Lucerna.

WELLBEING

Anime, Chatterbox, Christian Club, Film Club, Memory Club, SAGE, Wellbeing Waves.





BOARDING

Boarding at Kent College is a central part of school life and we welcome boarders from all over the world, as well as the UK. The boarding house is a home away from home, with a warm, friendly and family feel.

Our boarding house is modern and purpose built with spacious bedrooms, a large common room and fully equipped kitchens.

Boarders share in rooms of two and three. Older students may have their own room, some with an ensuite.

The boarding house is run by experienced staff including a house parent and assistant house parent, who are always on hand to provide encouragement, support and care.

We have an onsite medical centre, a dedicated pastoral team and two school counsellors who are there to help with our boarders' wellbeing.

A busy and varied after school and weekend programme is designed to be fun and relaxing. Trips and excursions take place throughout the term along with on-site workshops, cooking, crafting and cinema nights.

FULL BOARDING

Boarders stay at school for the full term with flexible exeats where they can remain at school for quiet study.

WEEKLY BOARDING

Boarders arrive at school on a Sunday night or Monday morning and remain until Friday for the duration of each term.

FLEXI BOARDING

Day students can stay from one to three nights a week on a regular or ad hoc basis.

DAY BOARDING

Day students can join boarders for activity evenings.

“Boarders collaborate well and progressively manage their study time more effectively due to the structured and supportive environment provided in the boarding houses.”

ISI 2023

LOCATION AND FACILITIES



Hawkwell Place

Kent College moved to its current location in Pembury in 1939, and the beautiful Victorian manor house is complemented by modern facilities including a science block, music school, art studios, 250 seat theatre, library, an indoor swimming pool, two sports halls, all weather astro pitch, fitness suite, outdoor confidence course, dance studio and boarding house.

The 75-acre rural site is surrounded by woodlands and is a peaceful, safe and secure place to learn and live. We are ten minutes from Tunbridge Wells, a spa town full of culture, and close to many historic attractions which makes for a rich and varied choice of weekend excursions for our boarders.



Sports Hall



Theatre



Art Balcony



Science Block



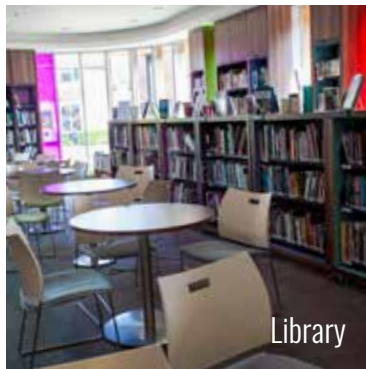
Art Room



Dining Hall



Library and Art Centre



Library



Outdoor Adventure Course



Wellbeing Hub



Swimming Pool



Fitness Suite



Organ Room



Grove Café



Music Block

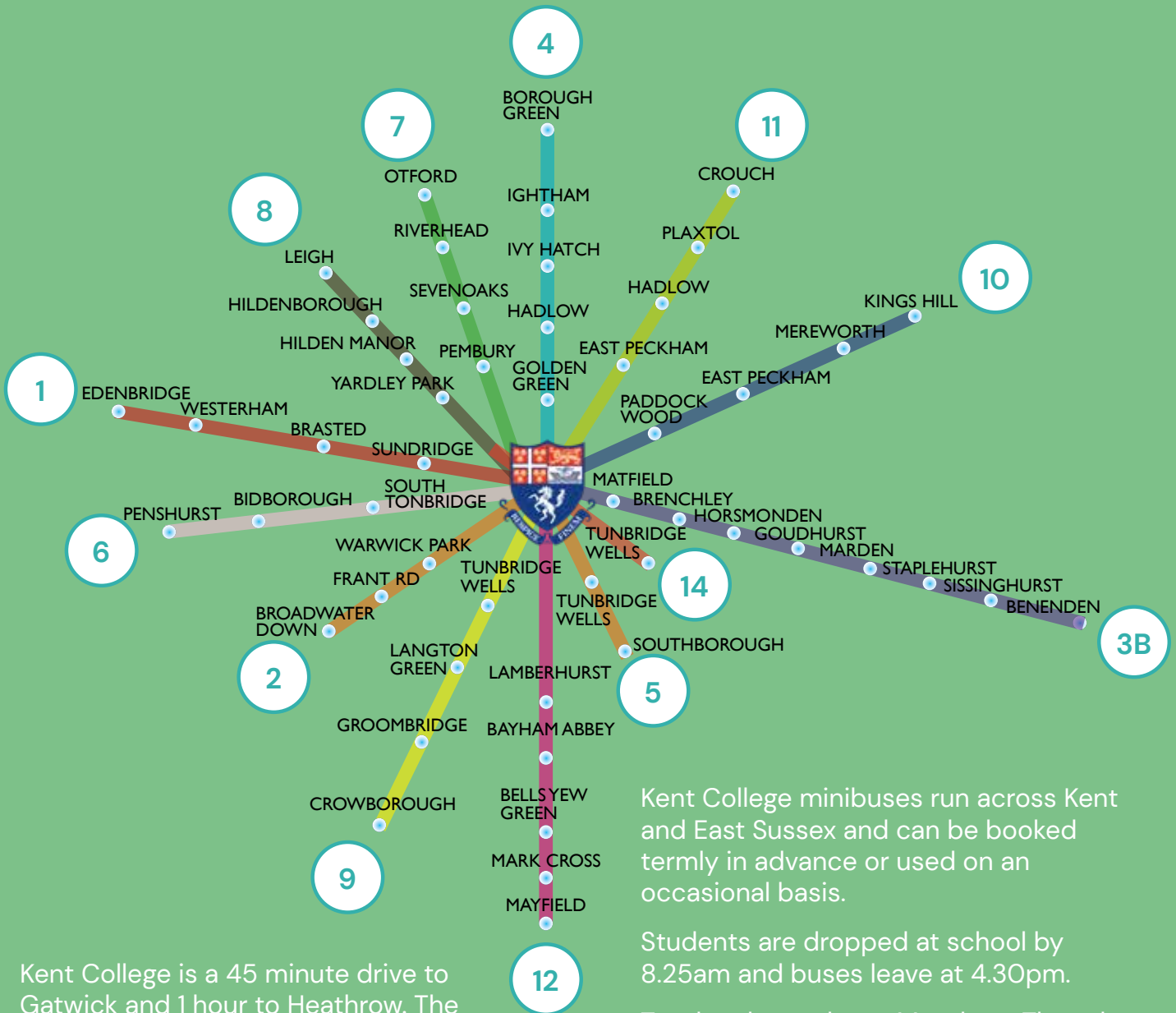


Classroom



Sports Pitches

TRANSPORT



Kent College is a 45 minute drive to Gatwick and 1 hour to Heathrow. The closest train station is Tonbridge with a 35 minute journey to London.



Kent College minibuses run across Kent and East Sussex and can be booked termly in advance or used on an occasional basis.

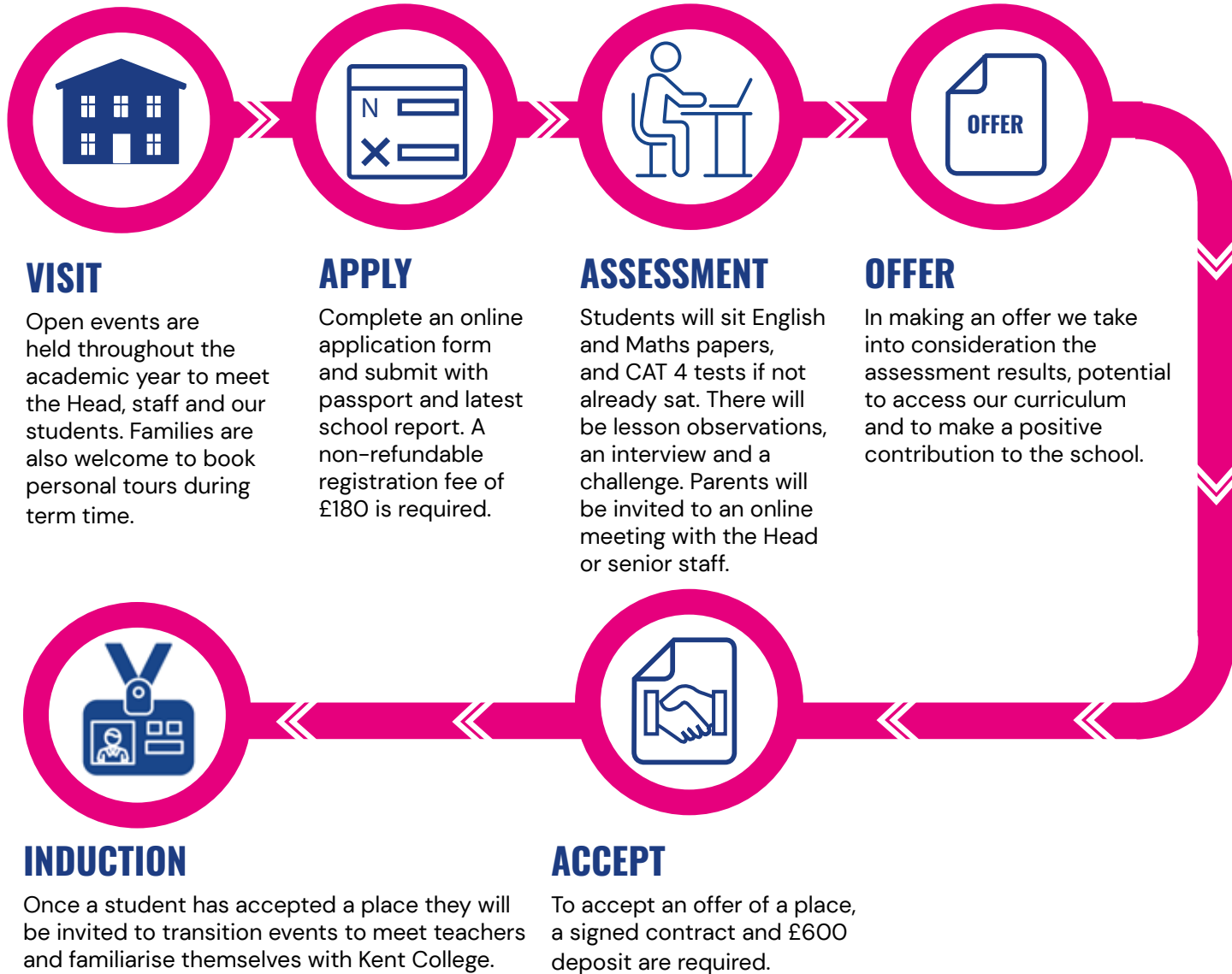
Students are dropped at school by 8.25am and buses leave at 4.30pm.

Two late buses leave Monday – Thursday at 5.30pm to the routes below.

Route A: Pembury, Tunbridge Wells, Southborough, Bidborough, Tonbridge, Hildenborough, Sevenoaks, Westerham, Edenbridge.

Route B: Matfield, Brenchley, Horsmonden, Marden, Staplehurst, Sissinghurst, Cranbrook, Goudhurst, Lamberhurst, Wadhurst, Mark Cross, Frant.

JOIN US



AWARDS

Scholarship and Exhibition awards are offered at Year 7, Year 9 and Sixth Form for Academic, Art, Dance, Drama, Music and Sport.

Each award is supported by an outstanding programme of supervision, mentoring, enhancement and extra-curricular activities, and our Scholar and Exhibitioners are expected to play an active and positive role amongst students and be ambassadors for their discipline.

Further information and the deadline to apply is published on our website.



BURSARIES AND DISCOUNTS

Support towards the payment of school fees is available through means tested bursary awards. These can only be applied for upon offer of a place. The deadline to apply is published on our website.

Where two or more siblings are attending the school at the same time, there is a 5% reduction on each child's fees.

For children of certain MOD personnel there is a 20% reduction of fees.

For children of Methodist families, funding may be available through the Methodist Bursary Scheme.

KEY FACTS

All-girls

SENIOR AND SIXTH FORM

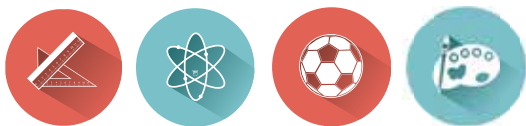
TERMLY

WEEKLY 

FLEXI & DAY
Boarding

BESPOKE
APPROACH 

Personalised GCSE
subject choice

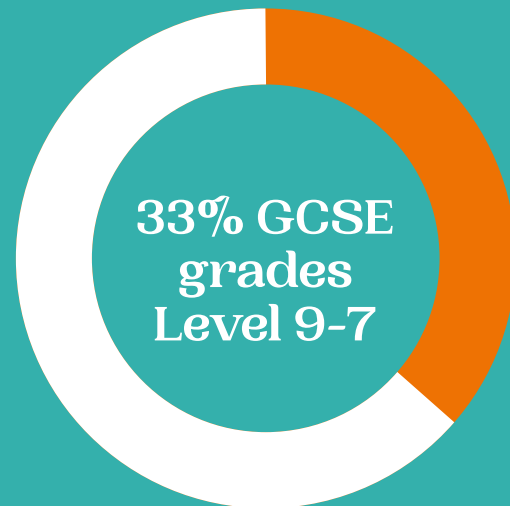


A WIDE RANGE OF
CO-CURRICULAR
Clubs and Activities

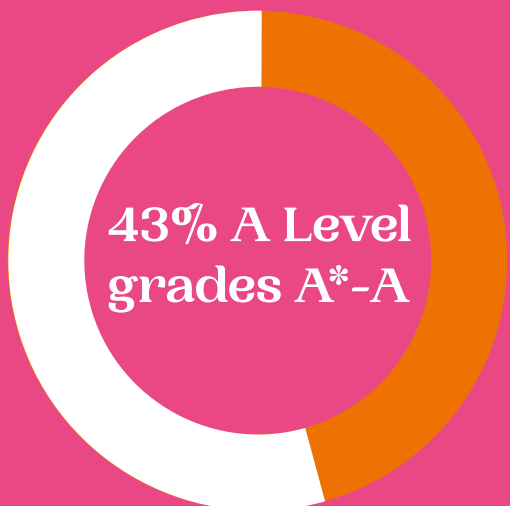


Kent College
opened its
doors 1886

GCSE
Results 2024



A Level
Results 2024





5 IS THE
AVERAGE
CLASS
SIZE AT A
LEVEL

12 IS THE AVERAGE
CLASS SIZE AT GCSE

A TOP
SCHOOL
IN THE UK FOR
VALUE ADDED

Students achieve
at least one grade
higher than
predicted at GCSE

85% 
ACCEPTED INTO THEIR
1ST CHOICE UNIVERSITY

Campus
located close
to Royal
Tunbridge Wells and
surrounded by
75 acres of
beautiful Kent
countryside 



Head:

Miss Katrina Handford BA (Hons), MEd, PGCE

head@kentcollege.kent.sch.uk

Interim Chair of Governors:

Mr Jon Wood

chairofgovernors@kentcollege.kent.sch.uk

Kent College
Old Church Road
Pembury
Tunbridge Wells
Kent TN2 4AX
UK

Telephone

01892 820218 (UK)

+44 (0) 1892 820218 (International)

Email

admissions@kentcollege.kent.sch.uk

www.kent-college.co.uk

